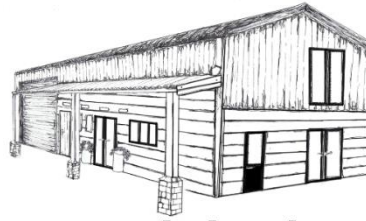


Café, Thursday – Sunday 9am-4pm

Also available for-

Venue hire Monday – Wednesday.  
With or without catering

Farm visits



**marsh larder**

[office@marshlarder.co.uk](mailto:office@marshlarder.co.uk)

marshlarder.co.uk

01379854714

07825422119

### COFFEE & CHOCOLATE

espresso - **£1.80**

macchiato - **£1.80**

americano - **£2.00 (large-£2.30)**

cappuccino - **£2.20 (large-£2.50)**

café latte – **£2.30**

flat white - **£2.40**

**HAVE A TOP UP OF THESE FOR £1.00  
(large-£1.20)**

mocha - **£2.50**

café freddo – **£2.50**

italian hot chocolate, white or dark - **£2.40**

- make it luxury - **+40p**

all decaffeinated options for coffee – **+ 30p**

extra shot – **30p**

syrups (vanilla or caramel) – **40p**

### SOFT DRINKS

still/sparkling water - **£1.75**

coke/diet coke - **£1.75**

r whites lemonade - **£1.75**

bertram's orange/apple juice - **£2.30**

presses (elderflower, raspberry lemonade,  
ginger beer) – **£2.40**

appletiser - **£2.30**

### TEAS

loose leaf English breakfast/early grey – **£2.00**

novus fruit/herbal tea (green, mint, citrus  
camomile or wild encounter) - **£2.00**

lemon and ginger - **£2.00**